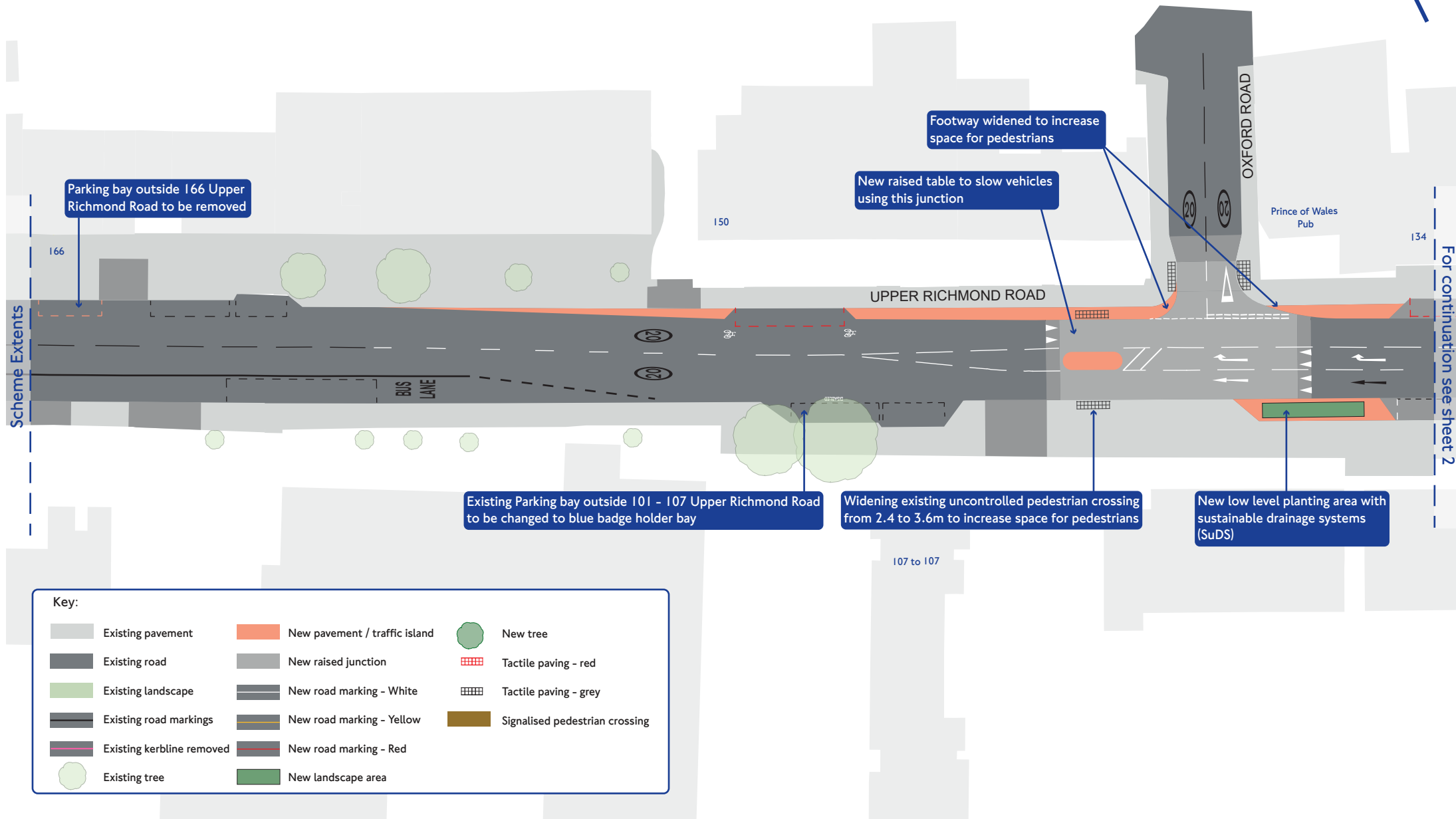


# Improvements to the area around East Putney Station

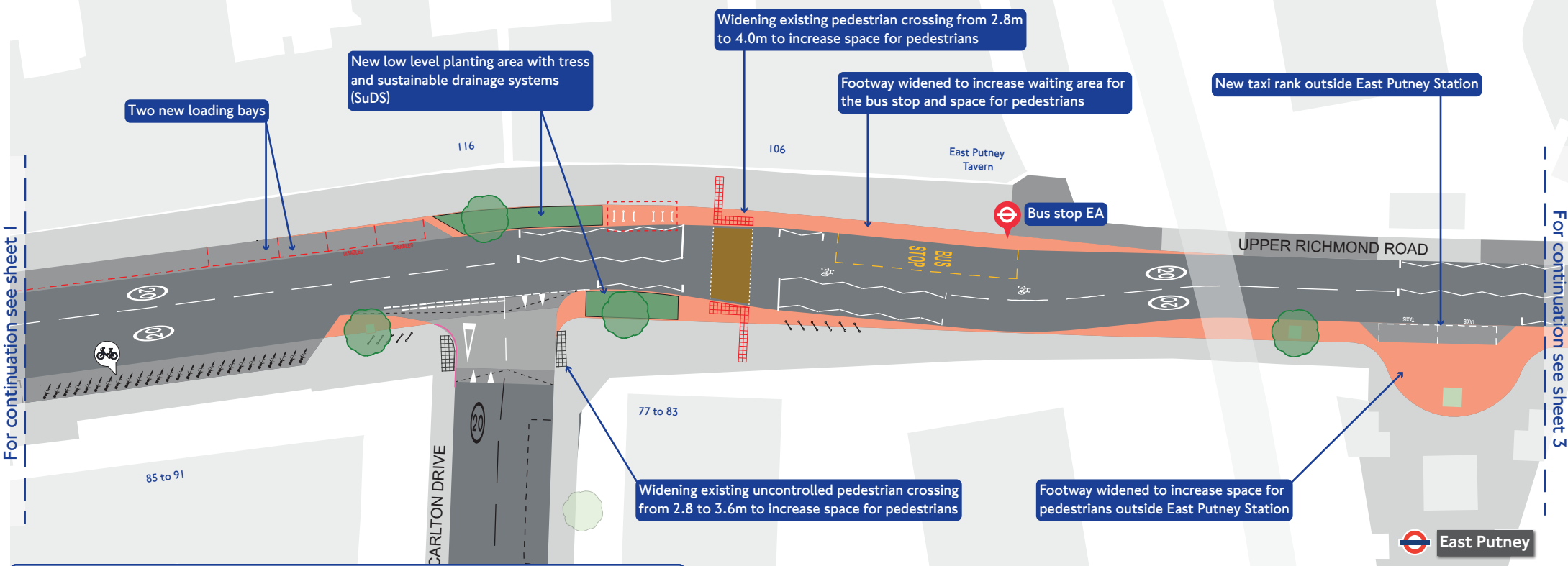
## Sheet 1 of 3



For continuation see sheet 2

# Improvements to the area around East Putney Station

## Sheet 2 of 3



For continuation see sheet 1

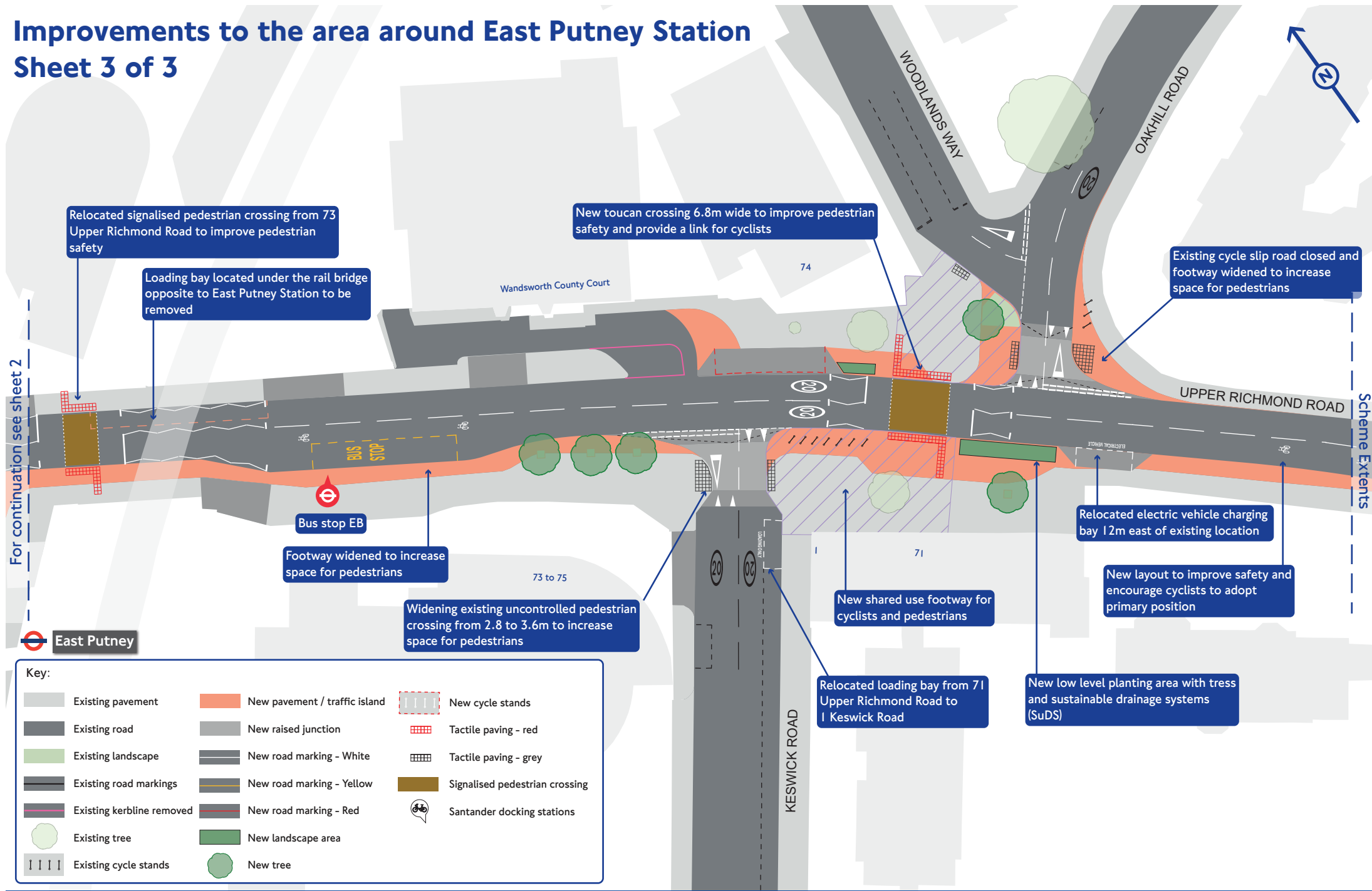
For continuation see sheet 3

**Key:**

Existing pavement	New pavement / traffic island	New cycle stands
Existing road	New raised junction	Tactile paving - red
Existing landscape	New road marking - White	Tactile paving - grey
Existing road markings	New road marking - Yellow	Signalised pedestrian crossing
Existing kerbline removed	New road marking - Red	Santander docking stations
Existing tree	New landscape area	
Existing cycle stands	New tree	

# Improvements to the area around East Putney Station

## Sheet 3 of 3



For continuation see sheet 2

Scheme Extents

Relocated signalised pedestrian crossing from 73 Upper Richmond Road to improve pedestrian safety

Loading bay located under the rail bridge opposite to East Putney Station to be removed

New toucan crossing 6.8m wide to improve pedestrian safety and provide a link for cyclists

Existing cycle slip road closed and footway widened to increase space for pedestrians

Bus stop EB

Footway widened to increase space for pedestrians

Widening existing uncontrolled pedestrian crossing from 2.8 to 3.6m to increase space for pedestrians

New shared use footway for cyclists and pedestrians

Relocated electric vehicle charging bay 12m east of existing location

New layout to improve safety and encourage cyclists to adopt primary position

Relocated loading bay from 71 Upper Richmond Road to 1 Keswick Road

New low level planting area with tree and sustainable drainage systems (SuDS)